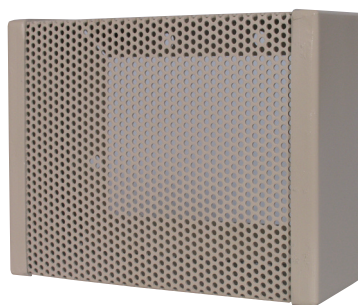


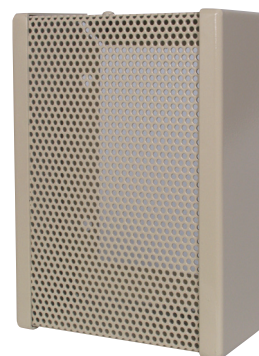
Steel Guards

FEATURES

- Constructed of heavy-gauge die-formed steel
- Provides full gravity air flow
- Installs easily without removing the thermostat from the wall
- Eliminates repair & replacement costs
- G2032 has key lock



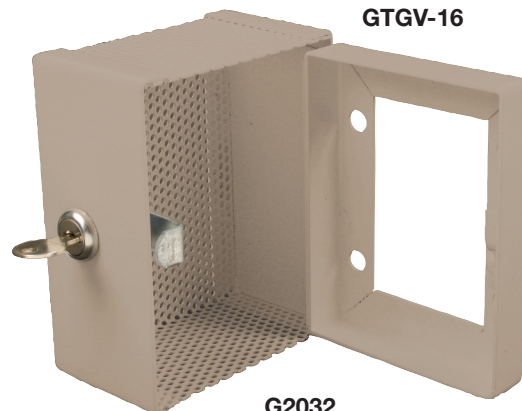
GTGH-16



GTGV-16



G2049



G2032

ORDERING INFORMATION

Part #	Description
GTGH-16	4" x 6" x 3"d, mounts horizontal
GTGV-16	6" x 4" x 3"d, mounts vertical
G2032	7 ³ / ₄ " x 7 ³ / ₄ " x 5"d
G2049	7" x 7" x 4" d

Dimensions indicate mounting frame opening and outside guard depth.

SPECIFICATIONS

Cover (top, front & bottom): 16 gauge perforated steel (1/8" perforations on 3/16" staggered centers)

Sides and frame: 14 gauge solid steel

Color: Cool tan enamel finish

At American Time & Signal, we continually strive to improve our products to meet our customers' needs and to provide the best possible value. The above specifications are believed to be correct, are subject to change without notice and may otherwise vary from the above. Please call if you need verification of any specifications or the suitability of a particular product for a particular application.

© American Time & Signal Company